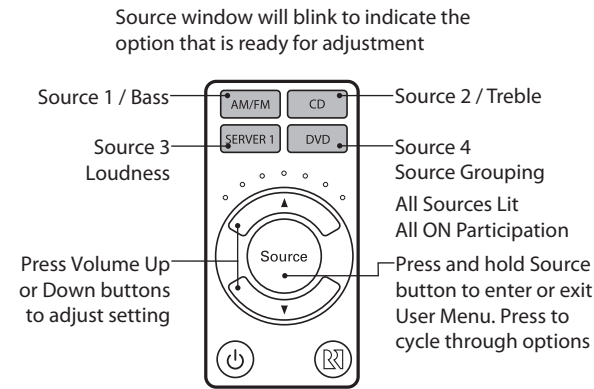


CA4-KP User Menu



Basics

The User Menu allows the user to adjust the audio properties and features of a particular zone. The audio features that can be adjusted are: Bass, Treble, and Loudness. Additional features that are selectable are Source Grouping and All ON Participation. The Source windows will illuminate to indicate the option ready for adjustment.

To enter the User Menu, press and hold the Source button for 3-seconds when the keypad is powered on. Another 3-second press and hold of the Source button (or a 9-second time-out) will return the keypad to regular operation.

The top left (Source 1) button will temporarily blink to indicate "Bass" is ready for adjustment. Subsequent presses of the Source button will toggle through Treble (Source 2), Loudness (Source 3), Source Grouping (Source 4), and All ON Participation (all four Sources lit).

Setting Bass and Treble

1. Enter the User Menu.
2. Press the source button to select Source 1 (upper left) for Bass or Source 2 (upper right) for Treble. The windows will blink the option available for adjustment.
3. Press the volume up or down to adjust the settings. The LEDs above the volume up button will indicate the change. The middle LED will flash when flat.
4. Either press the Source button to go to the next option or exit the User Menu by a 3-second press of the source button or a time-out.

Setting Loudness

1. Enter the User Menu.
2. Press the source button to select Source 3 (lower left) for Loudness. The window will blink. Press the volume up button to turn the feature ON, or the volume down button to turn it OFF. The far right hand volume LED will indicate ON and the far left hand volume LED will indicate OFF.
3. Either press the Source button to go to the next option or exit the User Menu by a 3-second press of the source button or a time-out.

Setting Source Grouping

1. Enter the User Menu. Only zones connected to the same controller can be grouped.
2. Press and release the source button to cycle to and select Source 4 (lower right). The window will blink.
3. Pressing the volume up button will activate the feature and pressing the volume down button deactivates the feature. The far right hand volume LED will indicate ON and the far left hand volume LED will indicate OFF.
4. Exit the User Menu by a 3-second press of the source button or a time-out.
5. Go to another keypad connected to the same controller and repeat the procedure to link the zones. Any source changes on any of the linked keypads will be tracked and updated on all source linked keypads. Volume control remains independent as well as zone ON and OFF.

Setting All ON Participation

1. Enter User Menu. The default is All ON Participation Enabled.
2. Press and release the source button, until all the source buttons are lit. It will cycle through each individual source and then all sources will be lit.
3. Press the Volume Up button to turn the feature ON, or the Volume Down button to turn the feature OFF. The far right hand volume LED will be lit to indicate that the keypad is enabled to respond, or the far left hand volume LED will indicate that the keypad will not respond to the All ON command.
4. Either press the Source button to go to the next option or exit the User Menu by a 3-second press of the source button or a time-out.

Conditions/ Notes

- If the keypad is disabled to respond to the All ON command and is OFF when the All ON command is issued, it will not respond to the command. If it is turned ON while Party Mode is active on the system or was ON prior to Party Mode being initiated, it will automatically be entered into Party Mode as a non-Master.
- If the keypad is enabled to respond to the All ON Participation command and is OFF when the All ON command is issued, it will turn on and enter into Party Mode as a non-Master.
- The keypad issuing the All ON command will be the master keypad and be able to control the source selection for other zones.
- Non-Master keypads in Party Mode cannot change the source. They will all show and follow the source choice of the Master keypad. If a user tries to change sources with a non-Master keypad, the source and volume up / down buttons will blink three times to indicate the error.
- Non-Master keypads can be turned OFF by a press and release of the Power button. Any keypad (Master or non-Master) can issue an All OFF command.
- Turning the Master keypad OFF will exit Party Mode.
- A non-Master keypad cannot issue an All ON command.

Safety Instructions

1. Read Instructions - All the safety and operating instructions should be read before the appliance is operated.
2. Retain Instructions - The safety and operating instructions should be retained for future reference.
3. Heed Warnings - All warnings on the appliance in the operating instructions should be adhered to.
4. Follow Instructions - Follow all operating and user instructions.
5. Water and Moisture - The appliance should not be used near water; for example, near a bathtub, washbowl, kitchen sink, laundry tub, in a wet basement, or near a swimming pool.
6. Wall Mounting - The appliance should be mounted to a wall as recommended by the manufacturer.
7. Heat - The appliance should be situated away from heat sources such as radiators, heat registers, stoves, or other appliances (including amplifiers) that produce heat.
8. Power Sources - The appliance should be connected to a power supply only of the type described in the operating instructions or as marked on the appliance.
9. Grounding or Polarization - Precaution should be taken so that the grounding or polarization means of an appliance is not defeated.
10. Object and Liquid Entry - Care should be taken so that objects do not fall and liquids are not spilled into the enclosure through the openings.
11. Damage Requiring Service - The appliance should be serviced by qualified service personnel when:
 - The power supply cord or the plug has been damaged;
 - Objects have fallen, liquid has been spilled into the appliance;
 - The appliance has been exposed to rain;
 - The appliance does not appear to operate normally; or
 - The appliance has been dropped or the enclosure is damaged.
12. Servicing - The user should not attempt to service the appliance beyond that described in the operating instructions. All other servicing should be referred to qualified service personnel.
13. Care - From time to time you should wipe off the front panel with a soft dry cloth.

Limited Warranty

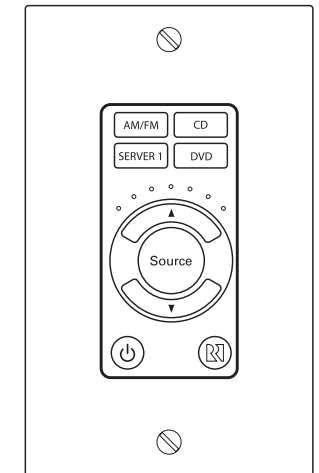
The Russound CA4-KP is fully guaranteed for two (2) years from the date of purchase against all defects in materials and workmanship. During this period Russound will replace any defective parts and correct any defect in workmanship without charge for either parts or labor. For this warranty to apply, the unit must be installed and used according to its written instructions. If service is necessary, it must be performed by Russound. Russound assumes no responsibility for defects resulting from abuse or servicing performed by an agency or person not specifically authorized in writing by Russound. Damage to or destruction of components due to improper use voids the warranty. In these cases the repair will be made at the owner's expense. Accidental damage and shipping damage are not considered defects under the terms of the warranty. To return for repairs, the unit must be shipped to Russound at the owner's expense, along with a Return Authorization number and documentation explaining the nature of the service required. Any product returned without prior written permission will be returned to sender. Russound sells products only through authorized Dealers and Distributors to ensure that customers obtain proper support and service. Any Russound product purchased from an unauthorized dealer or other source, including retailers, mail order sellers and online sellers will not be honored or serviced under existing Russound warranty policy. Any sale of products by an unauthorized source or other manner not authorized by Russound shall void the warranty on the applicable product.



Copyright ©2008 Russound® All rights reserved. All trademarks are the property of their respective owners. Russound is not responsible for typographical errors or omissions. Specifications are subject to change without notice.

Russound®

CA4-KP Keypad for the CA4 Multizone Controller Installation and User Manual



Overview

The Russound CA4-KP is an in-wall keypad used with the CA4 controller in a multiroom audio system. The CA4-KP provides source selection and volume control with backlit push buttons, and an IR window to receive remote control signals for source control.

The volume up/down buttons control the speakers in the same zone as the keypad. Typical installations place one CA4-KP in each room of the CA4 system.

Key Features

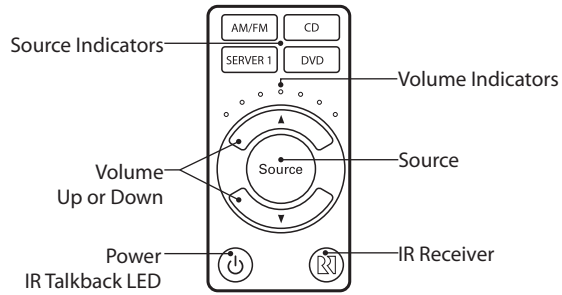
- Adjustable bass, treble, loudness, Party Mode and all off for total control
- Built-in IR receiver with IR confirmation LED
- IR control of sources via CA4-RC optional remote control
- Source Grouping

Specifications

- **Dimensions:** 1.8" x 1.2" x 4.1" (46 x 30 x 105 mm)
- **Weight:** 0.1 lb. (0.05 kg)
- **Keypad ports:** 1
- **Keypad Cables:** CAT-5 - RJ-45 termination
- **Max cable length:** Wall port to keypad 240' (73.2m)

Russound, Inc. 5 Forbes Rd., Newmarket, NH 03857, USA
tel 603.659.5170 • fax 603.659.5388 www.russound.com
technical support: 866.888.7466 e-mail: tech@russound.com
28-1305 6/16/08

CA4-KP Keypad Operation



Source Indicators: Indicates source playing or User Menu option.

Volume Level: Indicates the volume level or indicates User Menu option settings status.

Volume Up/Down: Raises/lowers zone volume or adjusts User Menu option settings.

Source: Cycles through the sources or cycles through User Menu options.

Power: Turns zone On/Off with a press, issues All ON and All OFF with a hold, indicates system status, and provides IR confirmation with red IR talk-back LED.

IR Receiver: Receives and repeats IR commands to the source equipment. Sources can be controlled with CA4-RC system remote or with original equipment remote controls.

Keypad Functions

Power ON/OFF: A press and release of the power, source or volume up /down buttons will turn the keypad ON. A second press and release of the power button will turn the keypad and the backlighting OFF. **Note:** If there are other keypads ON in the system the power button will remain lit.

Volume Adjustment: Upon initial powering of the keypad, the volume will automatically ramp up to the factory set turn-on volume level. Pressing the volume up or down buttons will change the volume accordingly. Volume levels will be indicated by the LEDs above the volume up button. Hold the buttons to ramp the volume up or down accordingly.

Source Selection: A press and release of the source button will cycle through the sources. The selected source indicator will be backlit on the keypad.

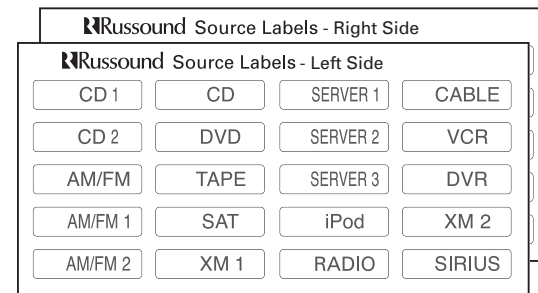
All ON: A press and hold of the power button (3 seconds) while the zone is already in the ON state will turn all keypads ON (if enabled to respond). The volume LEDs will light up from the center and ramp outward. (See usage note at right)

All OFF: A press and hold of the power button (3 seconds) while the zone is in the OFF state will turn all keypads OFF. The volume LEDs will light up from the center and ramp outward. The backlighting on all keypads will turn off and the system will be in Standby mode.

Connection Instructions

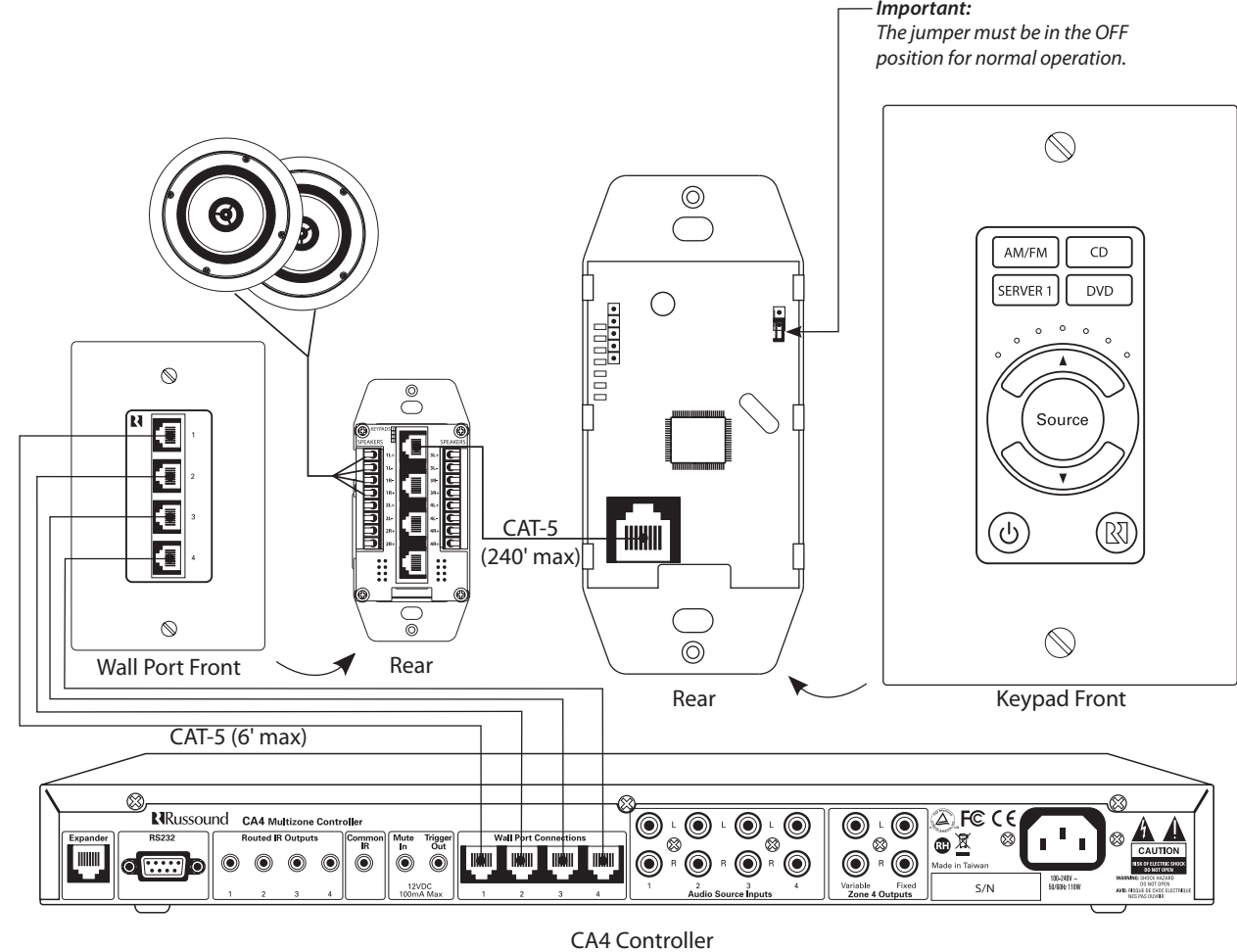
1. Ensure it is possible to run the wire to the location you have chosen.
2. To install the keypad, you will need to use a UL/CSA approved plastic single-gang (18 ci) electrical box.
3. Route CAT-5 wire to the electrical box from the CA4 Wall Port. The cable length from the wall port to the keypad should not exceed a total of 240'. Mark the cables with the zone number or location. Use the supplied 6' CAT-5 patch cables to connect the controller to the wall port.
4. Terminate the CAT-5 wire with a RJ-45 plug using the T568A standard configuration. Plug the wire into the jack on the rear of the keypad.
5. Ensure the 2-pin jumper is in the off position (on one pin only) or removed from the pins.
6. Source labels must be inserted prior to installing the trim plate on the keypad. Determine the system's source names and numbers. (e.g., CD, Source 1).
7. Select the corresponding source name label from the included label sheets. Left-side labels are used for sources 1 and 3; right-side labels are used for sources 2 and 4.
8. Slide the label into the window slot until the source name is centered in the window.
9. Push any extra cable back into the wall or electrical box. Align the keypad back plate and screw the keypad to the electrical box.
10. Place the foam around the keypad face, and then align and screw the trim plate to the keypad.

Important: All four connections from the controller to the wall port must be made, even if there are less than 4 keypads connected to the system. Cables between the wall port and the controller must match numerically (#1 on the wall port to #1 on the controller). Swapping cables between wall port jacks and the controller may damage the system.



All ON Usage Note: If initiating an All ON command, all other powered zones will automatically be placed into a Party Mode as non-Masters and will not have independent source selection. The initiating keypad is the Master and will need to be turned off to discontinue the Party Mode before source selection can be available for other zones.

Connection Diagram



Important:
The jumper must be in the OFF position for normal operation.

RJ-45 CAT-5 Wiring Scheme

